

OpenHomesPhotography.com

780 MCDONELL DRIVE

EXCEPTIONAL SOUTH SAN FRANCISCO HOME



READ, APPROVED & UNDERSTOOD

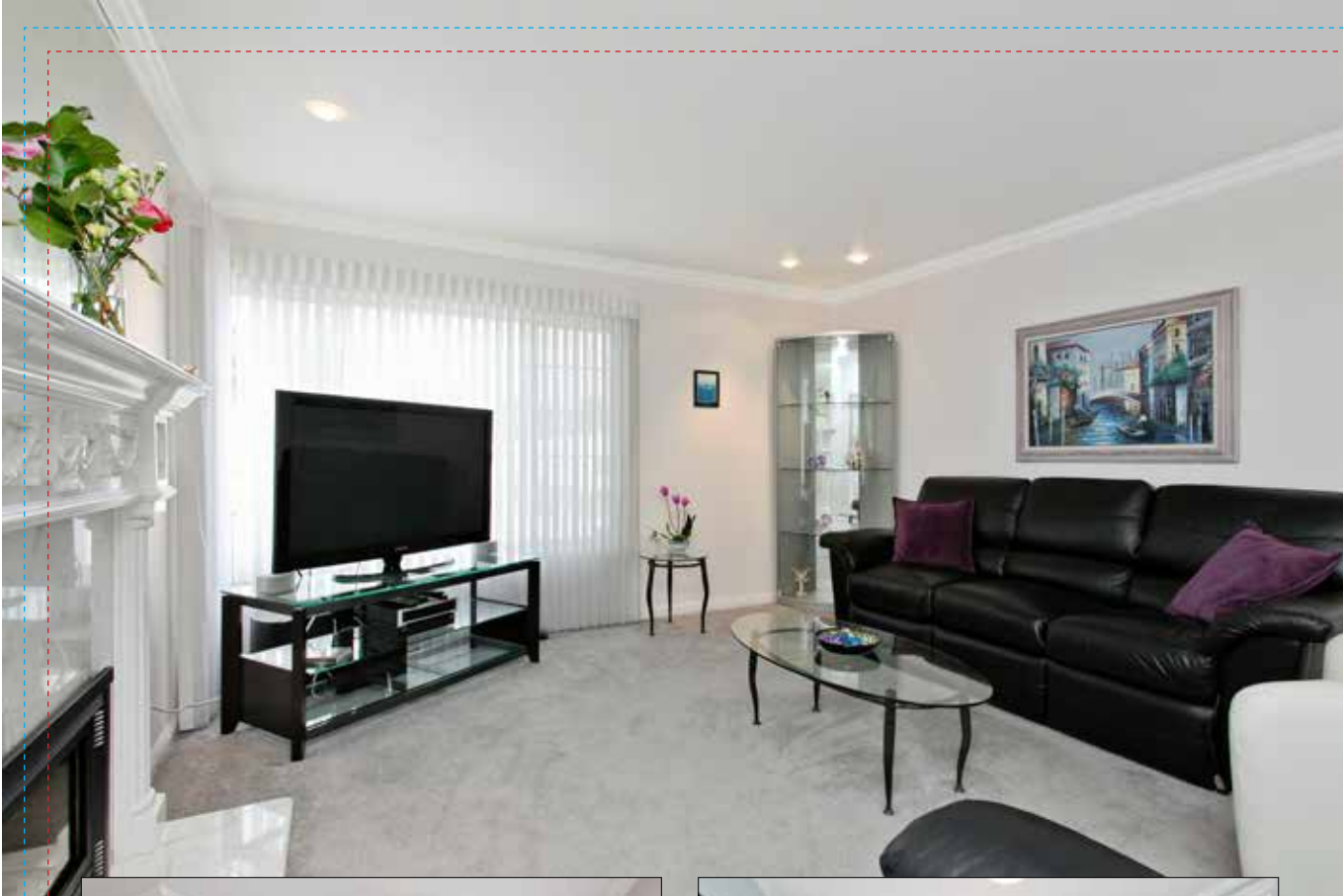
pgs 1-2



ZEPHYR
REAL ESTATE
Cheryl Bower
Realtor, CRS, GRI, ABR, ePro, SRES
Zephyr Real Estate
BRE# 0150551
415-999-3450 mobile
415-999-3450 direct
cheryl@cbower.com
www.CBower.com



ZEPHYR
REAL ESTATE



EXCEPTIONAL SOUTH SAN FRANCISCO HOME

BE PREPARED TO FALL IN LOVE WITH THIS SERENE, THOUGHTFULLY UPDATED, 3 BEDROOM, 1 BATH HOME! THE CENTRAL LOCATION OFFERS CONVENIENT ACCESS TO HIGHWAY 280, 101, SAN FRANCISCO, SILICON VALLEY, BART & SFO. NEIGHBORHOOD OFFERINGS INCLUDE COSTCO, TRADER JOE'S, KAISER & SERRAMONTE SHOPPING CENTER.

FEATURES INCLUDE:

- UPDATED KITCHEN WITH STAINLESS APPLIANCES & QUARTZITE COUNTERS
- UPDATED BATHROOM
- DUAL PANED WINDOWS THROUGHOUT
- SPACIOUS LOW MAINTENANCE YARD WITH DECK
- 3RD BEDROOM/OFFICE WITH BUILT IN CABINETS
- GARAGE WITH CUSTOM FLOORING & BUILT IN CABINETS
- CUSTOM HUNTER DOUGLAS WINDOW COVERINGS
- ALARM SYSTEM

UPGRADES INCLUDE:

- NEWER ROOF - 2009
- NEWER SEWER LINE - 2013
- NEWER WATER HEATER ~ 3 YEARS OLD
- FURNACE - 2002
- ECO-FRIENDLY GAS FIREPLACE INSERT ~ 2006

VIDEO, PHOTOS & INTERACTIVE FLOOR PLAN AT [WWW.780McDONELL.COM](http://www.780McDONELL.COM)

THIS INFORMATION, WHILE NOT GUARANTEED, HAS BEEN ACQUIRED FROM SOURCES BELIEVED TO BE RELIABLE. AGENT HAS NEITHER PERSONALLY MEASURED NOR VERIFIED ANY SQUARE FOOTAGE. BUYERS TO VERIFY SQUARE FOOTAGE IF IT'S OF IMPORTANCE TO THEM & ANY REFERENCED HOA DETAILS.

